

# Xi Direct Connect PC-Based solution with the Nokia 6230

## GSM/GPRS/EDGE Testing

Use the latest EDGE Multi-slot class 10 mobile with X-TEL's Direct Connect PC-Based solution. Simply load Xi and attach the Nokia 6230 to your USB port using Nokia's improved USB interface and DKU2 cable. X-TEL provides a 12 satellite USB GPS with every Direct Connect system for navigation support.



## Cost Effective

Cost effectively test voice and Nokia's 6230's ability to use five time slots for data transfer. A maximum of four downlink and one uplink, or three downlink and 2 uplink is possible with the 6230 (4+1 or 3+2).

## Fully Upgradeable

The system can be expanded at any time to include:

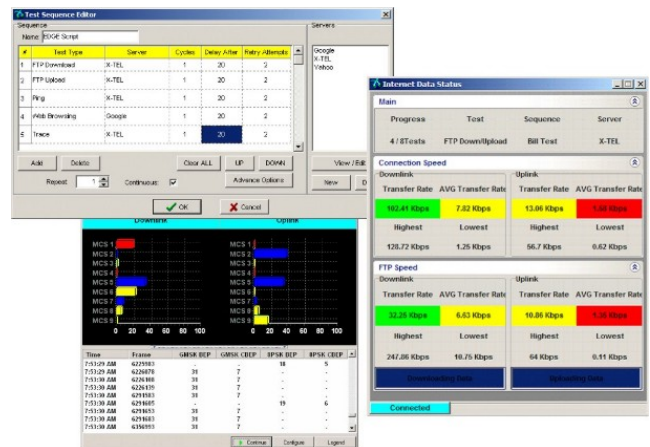
- Additional Test Mobiles
- Technology Specific Scanners
- XQi Voice Quality Evaluation
- Host Controller Unit 2

## Xi Data Collection and Analysis Software

Xi for the Direct Connect PC-Based system is the full version with all the capabilities included in the Host Controller Unit systems, including in-building navigation, voice call scripting, data session generator, Heads Up Display (HUD) view, to name a few.

## Data Session Generator

With X-TEL's new Data Session Generator you can quickly script, automate, and test various end-user usage models which includes the ability to perform tasks such as FTP downloads and uploads, web browsing, traces and pings to evaluate your data network.



For further information about the Direct Connect PC-Based system with the Nokia 6230, contact X-TEL at [info@x-tel.com](mailto:info@x-tel.com) or via telephone at (630) 705-9090.

Copyright © 2004 X-TEL Communications, Inc.  
 1919 S. Highland Ave. ■ Suite 255-D Lombard, ■ IL 60148 USA  
 630/705-9090 ■ Fax: 630/705-9191 ■ [www.x-tel.com](http://www.x-tel.com)