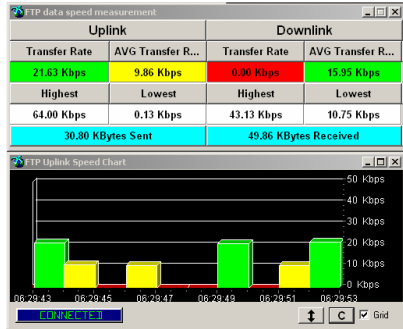


GPRS/EGPRS Data Testing

GSM/EGPRS test mobiles provide real time performance data on both the uplink and downlink paths. Collect throughput metrics, coding schemes and layer 3 messaging using Xi's automated FTP utility. Display all critical metrics in tables and in user-defined graphs.



The direct connect USB interface makes in-building collection as simple as connecting the test phone and running the in-building navigation utility. Drive testing is performed by connecting the USB GPS receiver to an available port.

Standard Features

- Real time map display showing vehicle position and key metrics
- USB GPS system with antenna
- Base station database conversion and display
- Customizable screen and window configurations
- Automatic Dial/Terminate with user defined timers and auto redial
- In-building / Campus Navigation Software
- Integrated data throughput analysis including application, RLC and LLC throughputs
- Automatic data testing with FTP connection
- Audible alerts utilizing Windows standard WAV files
- User defined Heads Up Display (HUD)
- Auto post-processing and plot generation
- Call monitor (hand-over, dropped, RSSI, RxQual, etc.)
- Synchronized playback customizable windows and wave file support
- Planet, Wizard, ASCII e xport utilities

Rush Street Specifications

- Select and display multiple metrics with metric Trailer feature
- Shadow feature tracks and display serving cell throughout drive test
- Standard and user defined plot preview templates
- Data queries with synchronized playback
- Base station BCCH co-channel and adjacent channel mapping
- Full layer support
- Supports any MapInfo compatible data set for mapping
- One button snapshot feature captures map and desktop displays into JPEG file for distribution

Optional Accessories

- Host Controller Upgrade (HCU) to support multiple phones and scanners.

SERVICE

Each GSM unit comes standard with a 12-month repair/exchange warranty, 24X7 technical support, software upgrades and training.

Test Mobile Options

850/900/1800/1900 MHz Subscriber Mobile

- * Standard performance metrics
- * RxLev, RxQual and Neighbor Information
- * C1 and C2, TX Power
- * Call Status, Cell ID and more...

850/1800/1900 MHz AMR Test Mobile

- * All GSM/GPRS Test Mobile metrics
- * AMR Codec Logging; C/I, CMI, etc.
- * FER Sub/ Full Metrics
- * AMR phone state
- * CMI Histogram

850/900/1800/1900 MHz GSM/GPRS Test Mobile

- * All subscriber performance metrics
- * GPRS Class B; WAP Protocol
- * Uplink and Downlink transfer metrics

850/1800/1900 MHz GSM/EGPRS Test Mobile

- * All GSM/GPRS Test Mobile metrics
- * EDGE MCS, modulation modes
- * Uplink and Downlink transfer metrics